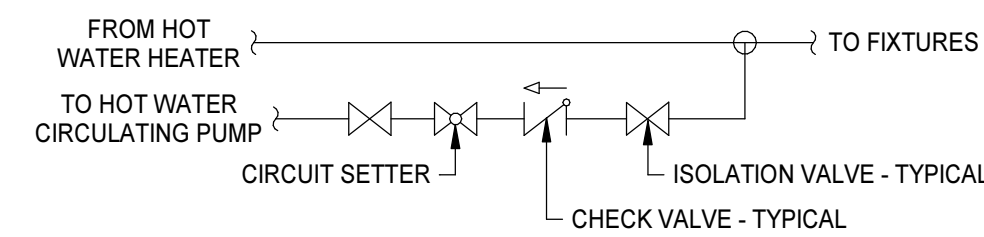
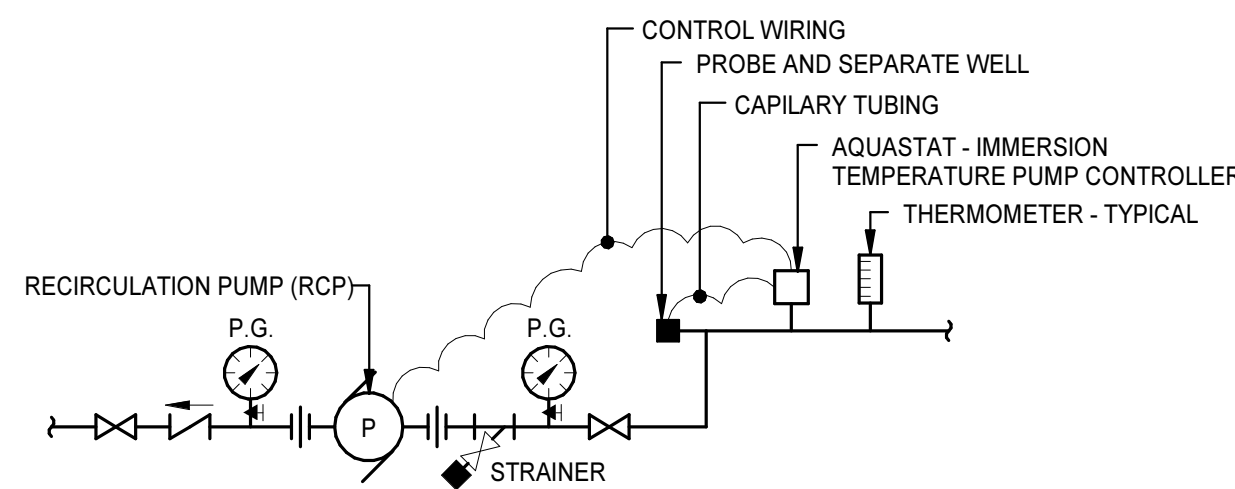


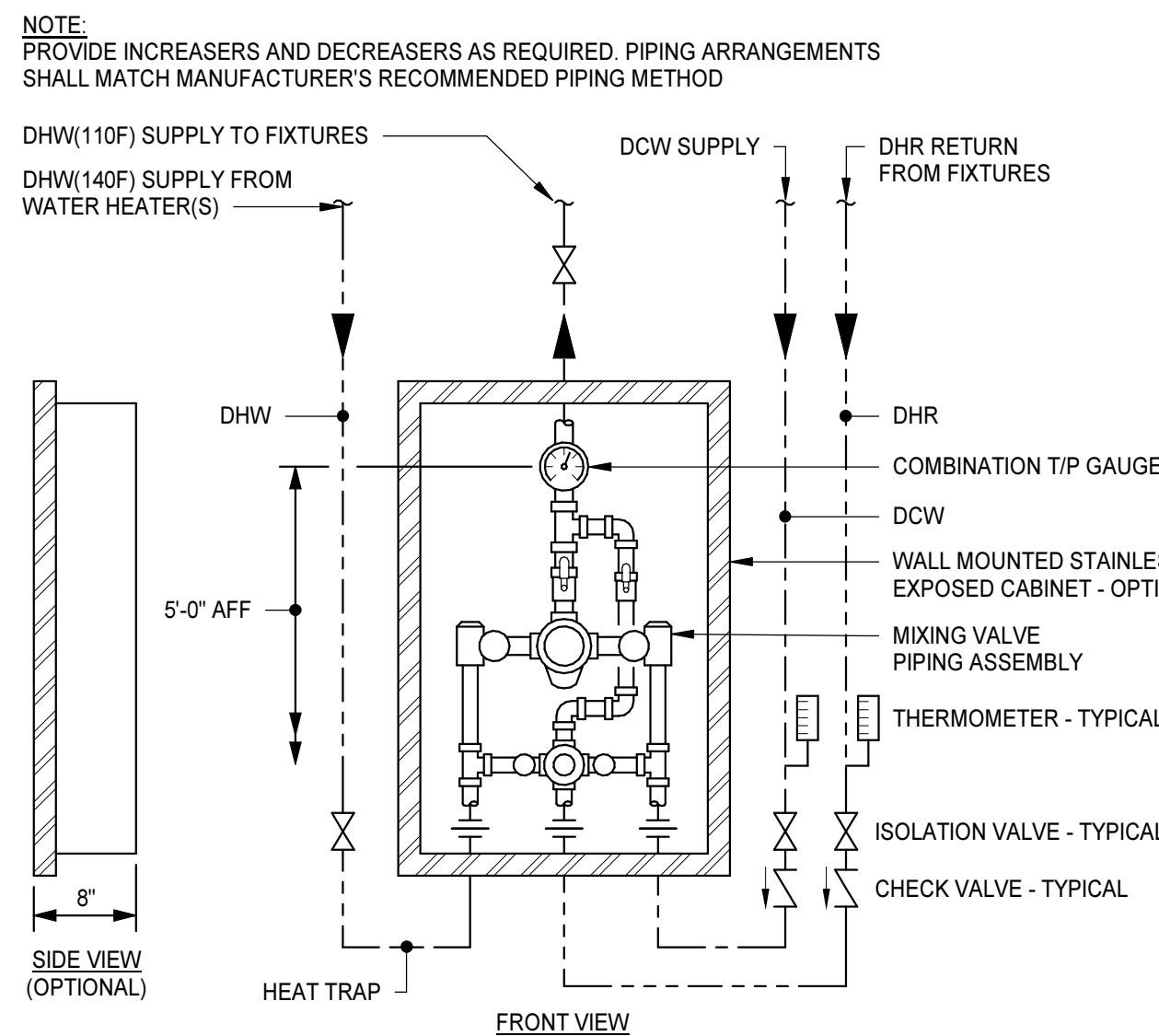
**(EW-2) EMERGENCY COMBINATION EYEWASH/SHOWER DETAIL**  
NO SCALE



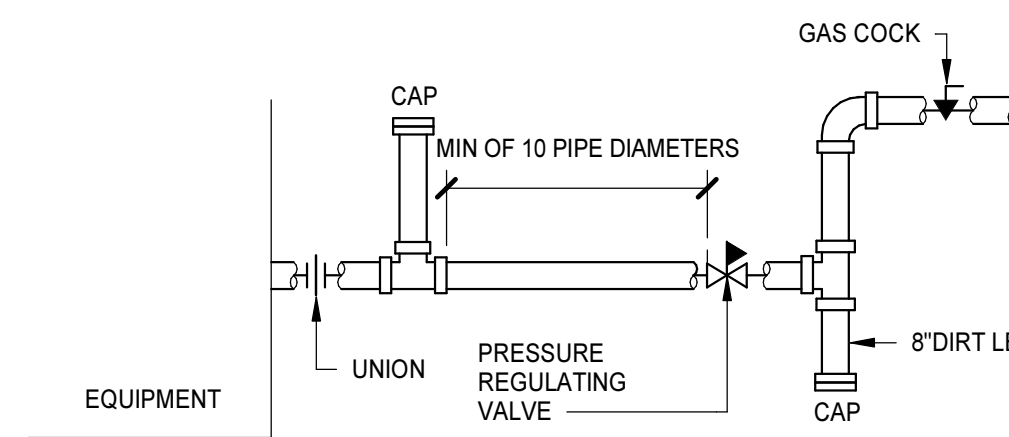
**HOT WATER RECIRCULATION BRANCH CONNECTION DETAIL**  
NO SCALE



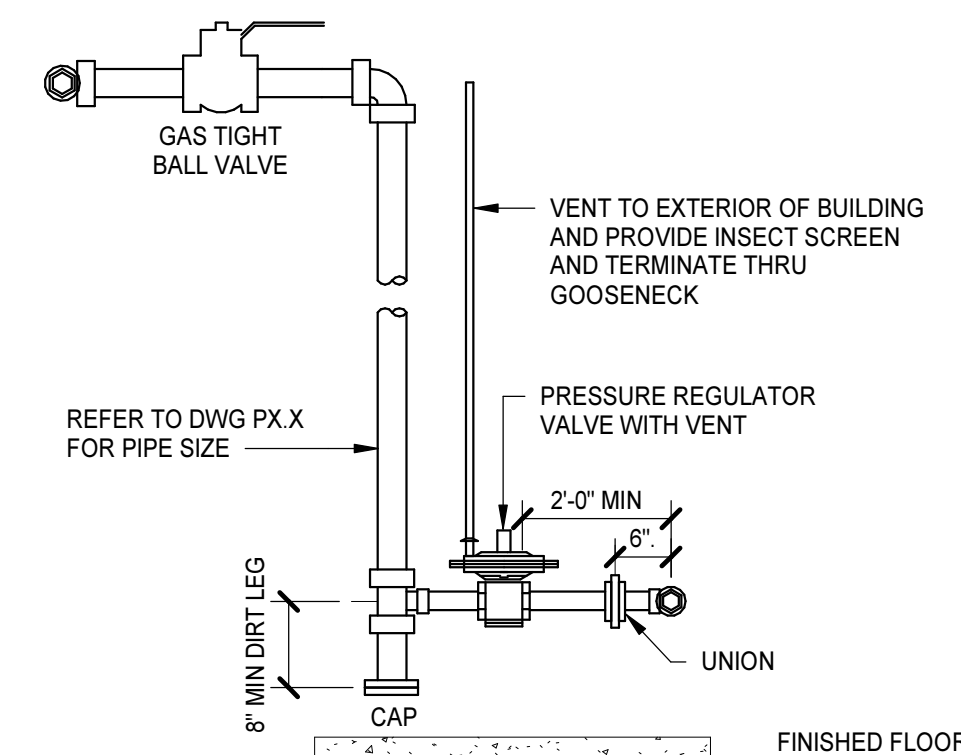
**CIRCULATION PUMP DETAIL**  
NO SCALE



**THERMOSTATIC MIXING VALVE DETAIL**  
NO SCALE

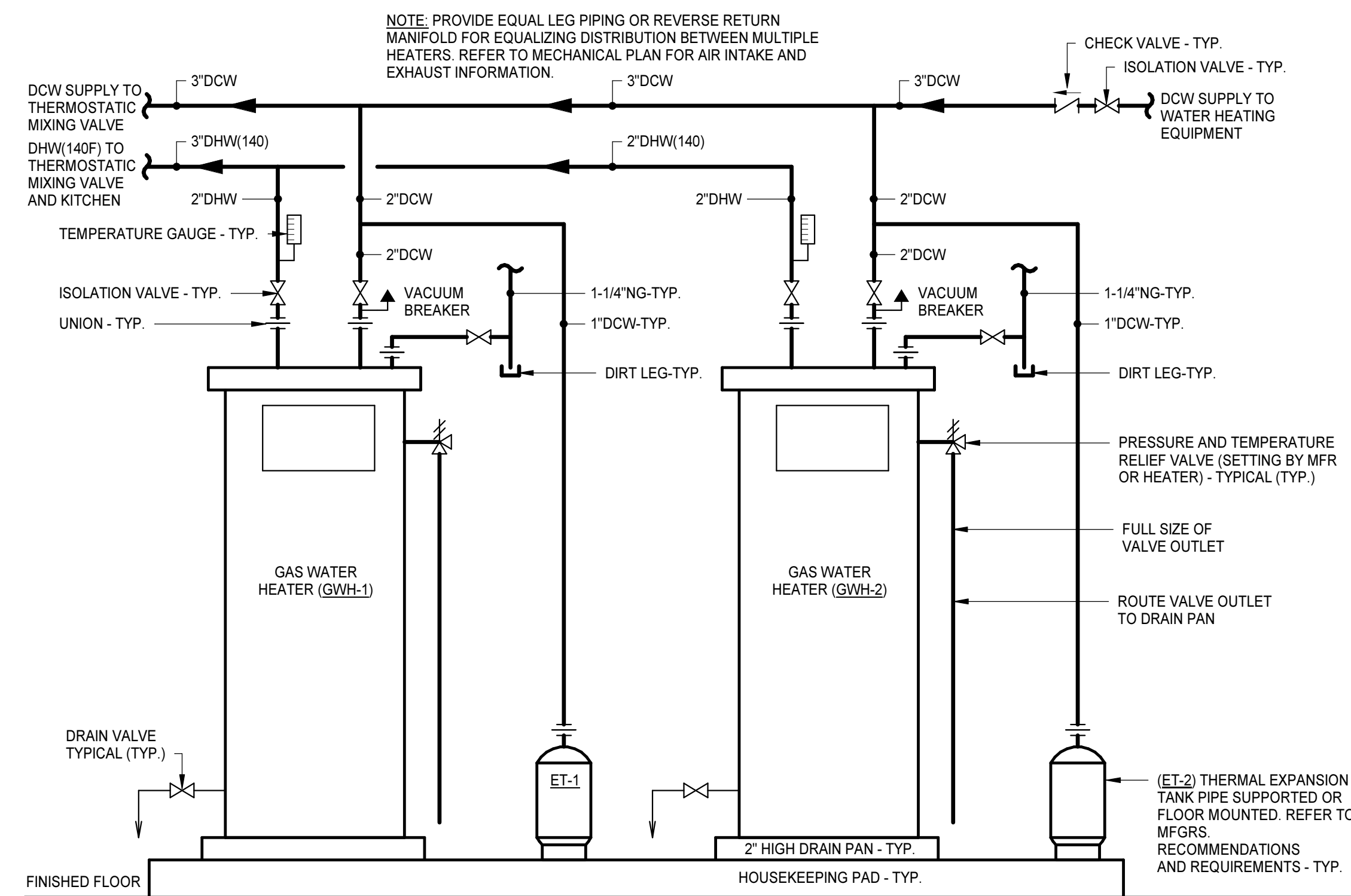


**GAS CONNECTION DETAIL**  
NO SCALE

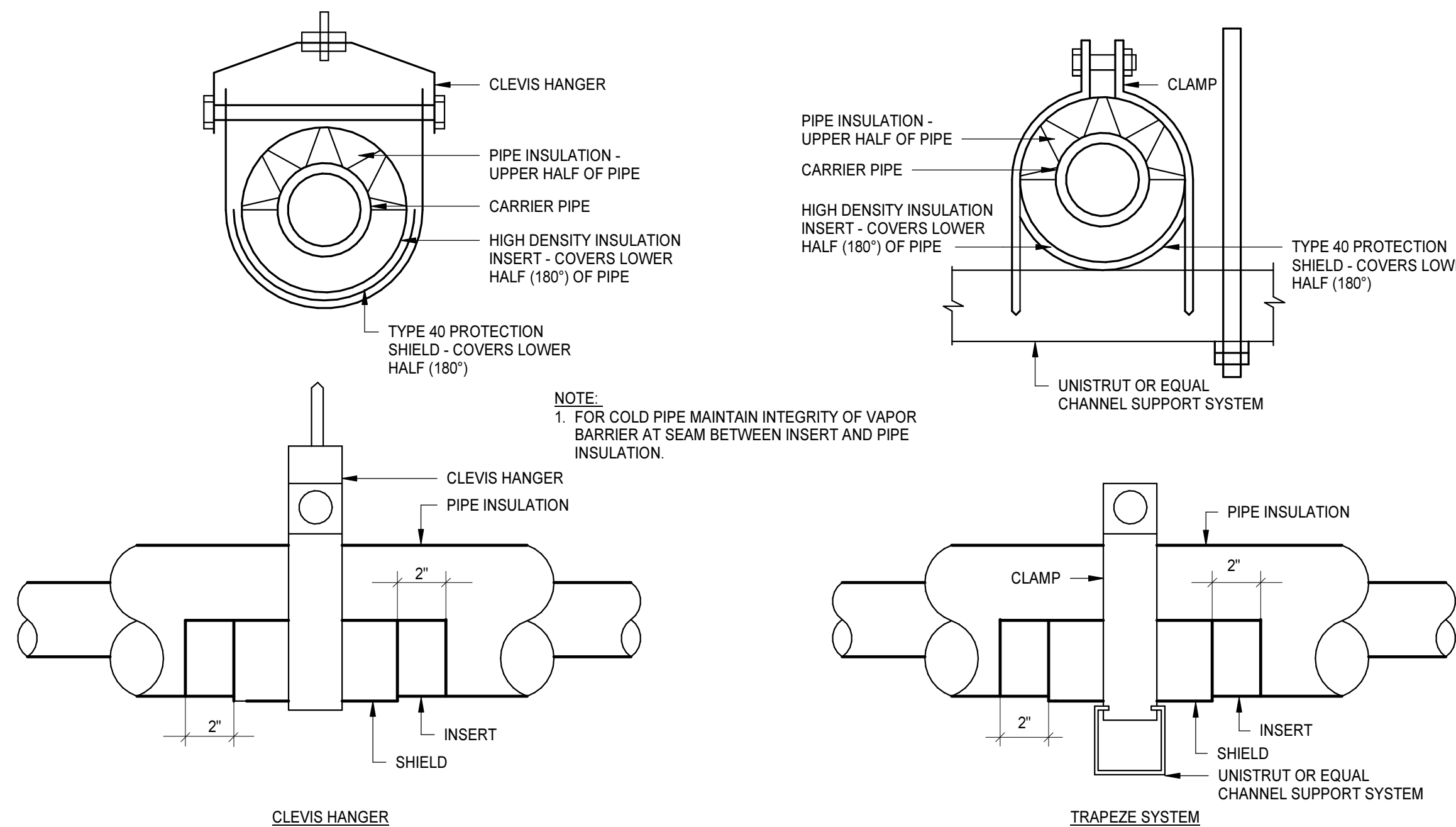


- NOTES:**
1. REGULATOR AND GAS PIPING FROM DIRT LEG TO EQUIPMENT SHALL BE SIZED IN ACCORDANCE WITH MANUFACTURER'S RECOMMENDATIONS.
  2. REGULATOR SHALL MEET EQUIPMENT MANUFACTURER PRESSURE AND FLOW REQUIREMENTS.
  3. ALL REGULATOR VENTS SHALL TERMINATE A MINIMUM OF 10'-0" AWAY FROM ALL OUTSIDE AND FRESH AIR INTAKES AND OPERABLE DOORS AND WINDOWS.

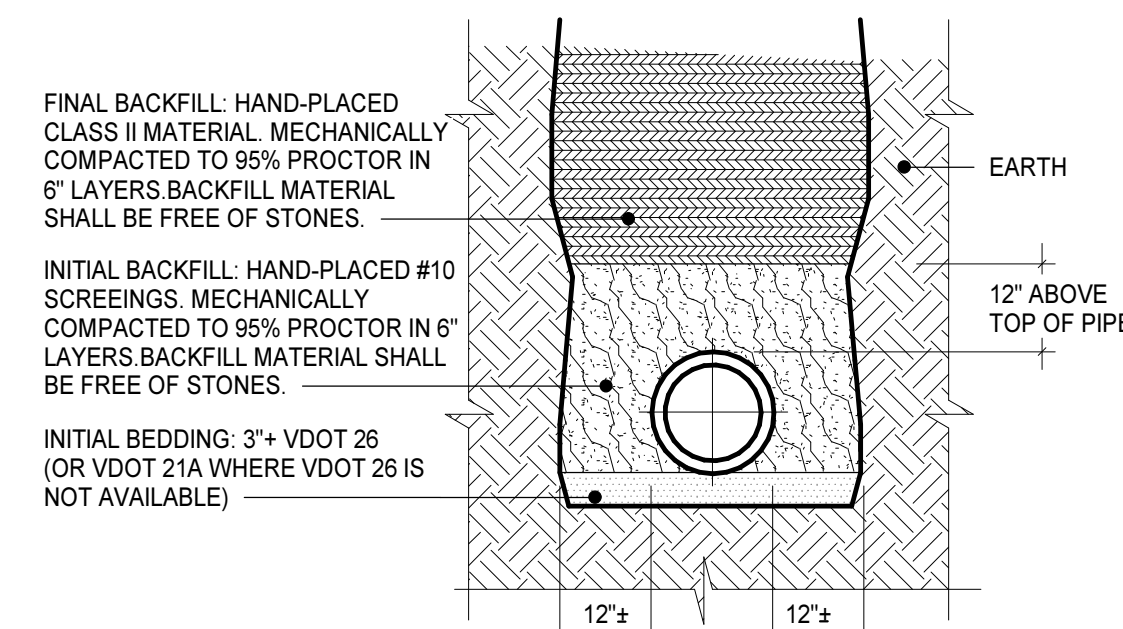
**GAS PIPE CONNECTION DETAIL**  
NO SCALE



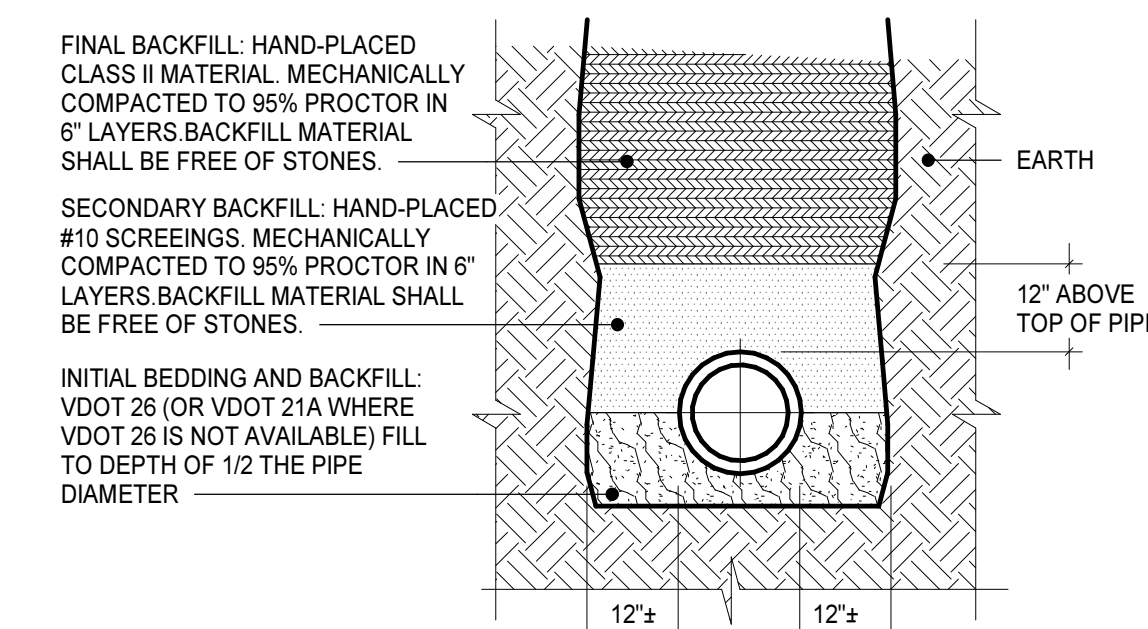
**FLOOR MOUNTED GAS WATER HEATER DETAIL**  
NO SCALE



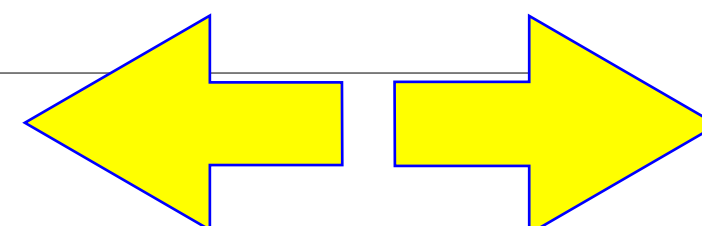
**PIPE SUPPORT AND THERMAL SHIELD DETAILS**  
NO SCALE



**CAST IRON PIPE BEDDING DETAIL**  
NO SCALE



**PVC PIPE BEDDING DETAIL**  
NO SCALE



PROJECT NO.	DATE
580999	MARCH 27, 2019
REVISIONS	
DATE	DESCRIPTION